

# MEDICAL DEVICE BROCHURE



**MENTAL LINK**  
INTERNATIONAL

**SAHPRA**  
South African  
Health Products  
Regulatory Authority

Licensed Wholesaler & Distributor





We are a cutting edge medical device and technology wholesale and distribution company. We provide assistive medical devices and the necessary medical equipment for the general improvement of the quality of life of people from all walks of life.

Our products are aimed to assist to bring about an individual's independence around seating, moving and general well-being and lifestyle.

Mental Link International is a SAHPRA registered and licensed company and ensures that all its products and accessories function efficiently and with effective ease.



Licensed.



**General Products**

**3 Ply Surgical Face Mask - Earloop**



**Shoe Cover (Overshoes)**



**Examination Gloves Nitrile**



**Protect Isolation Gown**



**Mop Cap (Disposable) Hairnet**



**Plastic Apron (Disposable)**



### Rapid Test Kits

Rapid PSA Test Card semi-quantitative determination of human prostate specific antigen (PSA) in serum, plasma or whole blood.



### Legionella Pneumonia Urinary Antigen Test Card

Rapid Legionella Urinary Antigen Test is an in vitro qualitative immunochromatographic assay for the rapid detection of legionella pneumophila antigens in human urine specimen.



### Rapid CEA Test Card

Rapid CEA Test is an immunochromatographic assay for the qualitative determination of Carcinoembryonic Antigen (CEA) in human serum, plasma or whole blood.



### HBsAg Self-Test Kit

HBsAg Self-Test Kit is a single use device, for qualitative detection of Hepatitis B virus surface antigen (HBsAg) in human serum, plasma or whole blood.



### Rapid Hantavirus Test Card

Rapid HFRS IgG/IgM Combo Test is a rapid immunochromatographic assay for the simultaneous detection of IgG and IgM antibodies to Hantavirus in human whole blood, serum or plasma.



### Syringe

Auto-disable syringes with a metal clip that locks the plunger after a single use. The syringe has a fixed needle and is packaged with plastic caps to keep the needle and plunger sterile before use. It is used for fixed-dose immunization.

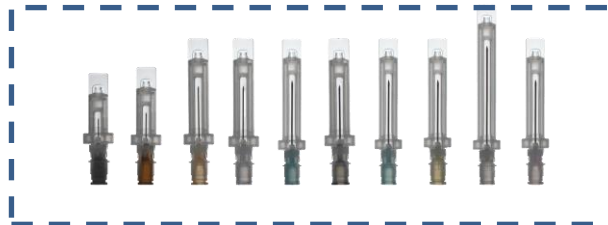
#### Nasal Wash Syringe



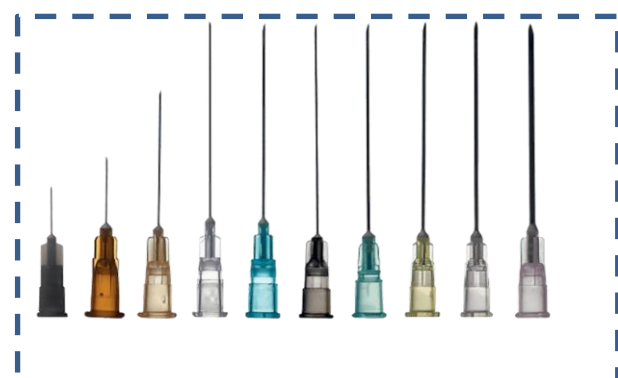
#### DRIVECANN W I.V. Cannula with wings and w/o port



#### Oneject Safety Needle



#### Safeject Disposable Syringe Needles



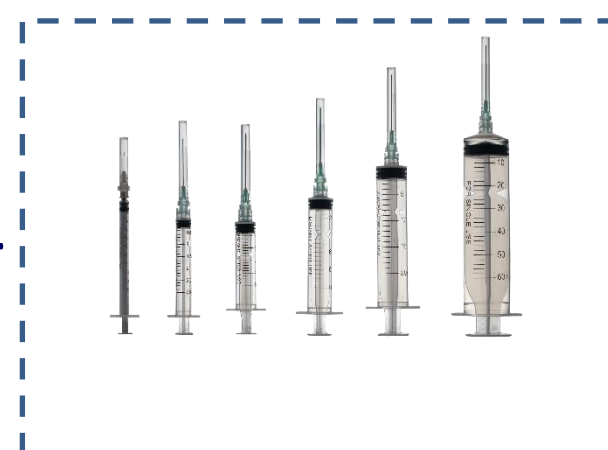
#### ECOCANN S Safety I.V. Cannula with wings and injection port



#### Dental Needle (Disposable)



#### Safeject Disposable Syringe



### Orthopedic Plastic Surgery instruments

We offer a broad portfolio titanium implants for orthopedic trauma. With our dedicated focus on development and the expansion of our portfolio and service offerings, our aim is to soon serve more than 90% of all trauma indications.

#### Tungsten Carbide jaws



#### Hank Uterine Dilators Set



#### Wire Tightner With Two Pegs



#### Pelvic Reconstruction System Phoenix (PRSPHX) PLATES



#### Intra Medullary Claw (IMC)



#### Headless Compression Screw (HCS)



#### Cannulated Screws (CAS)



#### Elastic Shoulder Immobilizer



**Baby monitors and ultrasound machines**

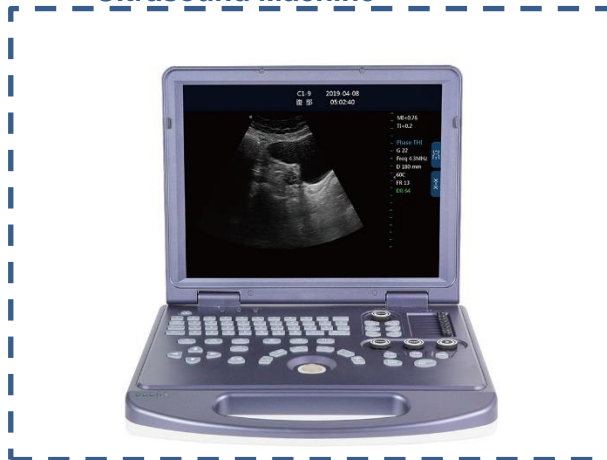
**Stable ultrasonic system**



**DW-T30 Trolley Ultrasonic Diagnostic Apparatus**



**DW-360 Laptop Black And White Ultrasonic Machine**



**DW-P50(P5PRO) 4d/5d Medical Echo Portable Ultrasound Scan Machine**



**Wireless Handheld Ultrasound Scanner**



**Ventilators, test tubes and instruments**



### Sodium Heparin/Lithium Heparin



Separating gel/coagulant (Gel&Clot Activator)



### Dräger Savina® 300 Select



### Dräger Babylog® VN800



### Dräger Oxylog® 3000 plus



### Medical Freezers

Ultra-low temperature medical storage box



Ice-lined vaccine storage box



Ultra-low temperature medical storage box



### Ultrasound Devices



### Wheelchairs (Motorised)



### Ventilators



### Wheelchairs (Non-Motorised)



### Patient Monitors



### Assistive Devices





**MENTAL LINK**  
INTERNATIONAL

Download this document  
here



Download our product  
list here



### Mental Link International

**Address:**

527 Makou Street, Monument Park,  
Pretoria  
0181

**Tel:**

+27 12 362 6502

**Email:**

sales@mentallink.co.za

**Web:**

www.mentallink.co.za

Scan me



Mental Link International is a SPI company.