

COMPANY PROFILE & DEVICE BROCHURE



MENTAL LINK
INTERNATIONAL



SAHPRA
South African
Health Products
Regulatory Authority

SAMED
advancing patient care through MedTech

Licensed Wholesaler & Distributor



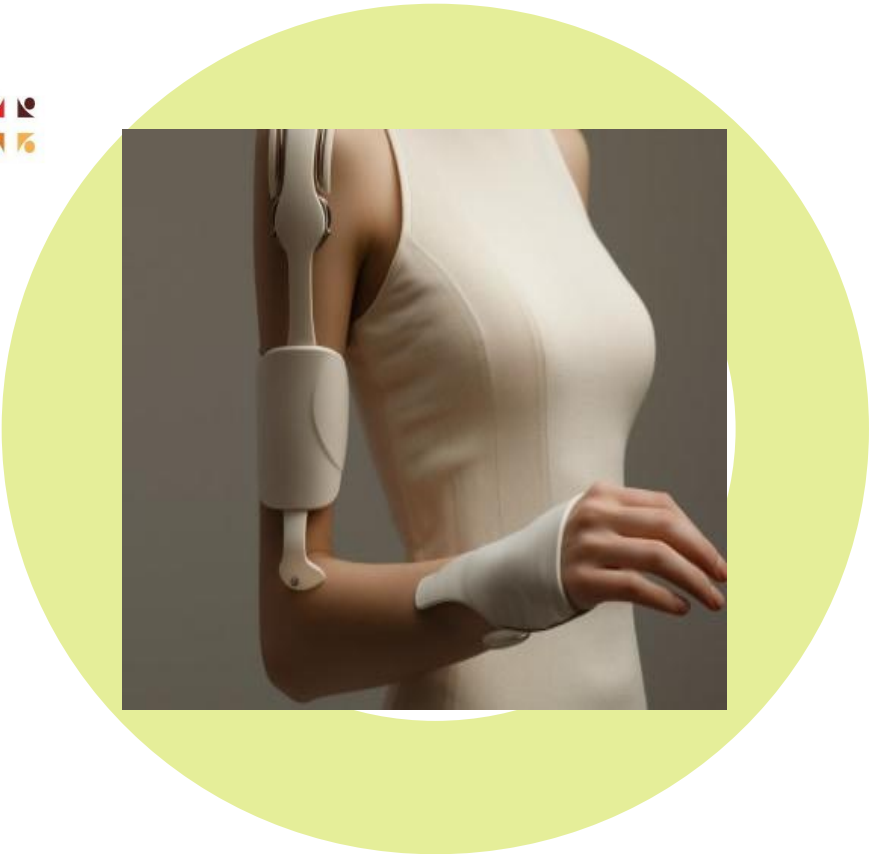
We are a cutting edge medical device and technology wholesale and distribution company. We provide assistive medical devices and the necessary medical equipment for the general improvement of the quality of life of people from all walks of life.

Our products are aimed to assist to bring about an individual's independence around seating, moving and general well-being and lifestyle.

Mental Link International is a SAHPRA registered and licensed company and ensures that all its products and accessories function efficiently and with effective ease.



Licensed Wholesaler & Distributor



WHO WE ARE

Innovative Solutions

We are at the forefront of medical device technology, offering products designed to improve the quality of life and ensure individuals' independence and comfort.

Wide Range of Products

Our extensive product line includes assistive devices that cater to various needs, promoting better mobility, seating, and general lifestyle enhancements.

Quality and Compliance

As a SAHPRA registered and licensed company, we guarantee that all our products and accessories meet the highest standards of efficiency and ease of use.



BENEFITS OF COLLABORATING WITH MENTAL INTERNATIONAL

Cutting-Edge Technology

Our products incorporate the latest advancements in medical technology, ensuring your clinics are equipped with state-of-the-art devices that improve patient care and operational efficiency.

Comprehensive Product Range

From personal protective equipment to advanced diagnostic tools and surgical instruments, we provide a wide array of products to meet all your medical supply needs.

Quality Assurance

All our products are rigorously tested and comply with international standards, providing peace of mind that you are receiving reliable and high-quality equipment.



Enhanced Patient Outcomes

Our assistive devices and medical equipment are designed to improve patient independence, comfort, and overall well-being, leading to higher patient satisfaction and better clinical outcomes.

Dedicated Support

We offer ongoing support and training to ensure that your team can effectively utilize our products, maximizing their benefits and efficiency in your clinical settings.

Regulatory Compliance

As a SAHPRA registered and licensed company, we adhere to the highest regulatory standards, ensuring all products are safe, effective, and compliant with relevant guidelines.



General Products

3 Ply Surgical Face Mask – Earloop



Shoe Cover (Overshoes)



Examination Gloves Nitrile



Protect Isolation Gown



Mop Cap (Disposable) Hairnet



Plastic Apron (Disposable)



Bandages



Airways Management

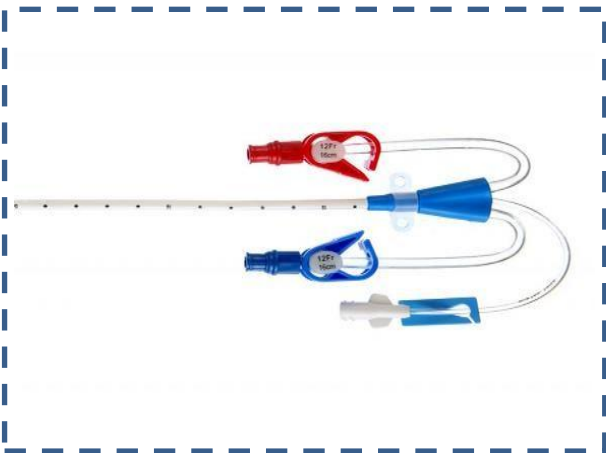


Packs and Trays

Parenteral Sets



Catheters



Surgical Sundries



Needles and Lancets



Decontamination



Disinfectants



Drip Stand



Blood Pressure Monitors



Saline Solutions



Rapid Test Kits

Rapid PSA Test Card semi-quantitative determination of human prostate specific antigen (PSA) in serum, plasma or whole blood.



Legionella Pneumonia Urinary Antigen Test Card

Rapid Legionella Urinary Antigen Test is an in vitro qualitative immunochromatographic assay for the rapid detection of legionella pneumophila antigens in human urine specimen.



Rapid CEA Test Card

Rapid CEA Test is an immunochromatographic assay for the qualitative determination of Carcinoembryonic Antigen (CEA) in human serum, plasma or whole blood.



HBsAg Self-Test Kit

HBsAg Self-Test Kit is a single use device, for qualitative detection of Hepatitis B virus surface antigen (HBsAg) in human serum, plasma or whole blood.



Rapid Hantavirus Test Card

Rapid HFRS IgG/IgM Combo Test is a rapid immunochromatographic assay for the simultaneous detection of IgG and IgM antibodies to Hantavirus in human whole blood, serum or plasma.



Syringe

Auto-disable syringes with a metal clip that locks the plunger after a single use. The syringe has a fixed needle and is packaged with plastic caps to keep the needle and plunger sterile before use. It is used for fixed-dose immunization.

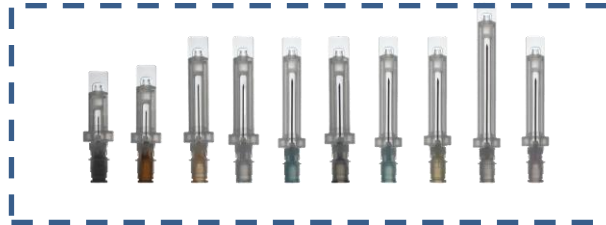
Nasal Wash Syringe



DRIVECANN W I.V. Cannula with wings and w/o port



Oneject Safety Needle



Safeject Disposable Syringe Needles



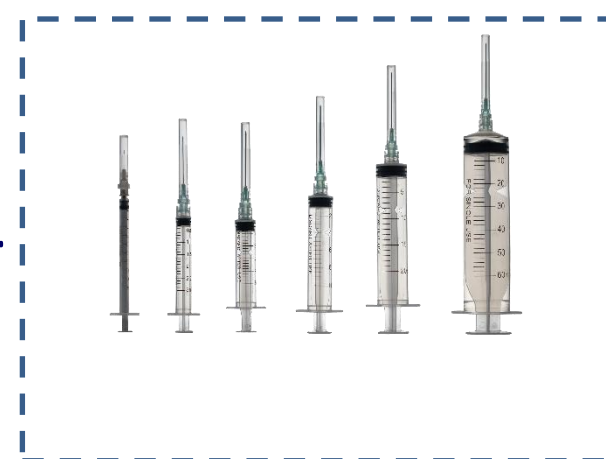
ECOCANN S Safety I.V. Cannula with wings and injection port



Dental Needle (Disposable)



Safeject Disposable Syringe



Orthopedic Plastic Surgery instruments

We offer a broad portfolio titanium implants for orthopedic trauma. With our dedicated focus on development and the expansion of our portfolio and service offerings, our aim is to soon serve more than 90% of all trauma indications.

Tungsten Carbide jaws



Hank Uterine Dilators Set



Wire Tightner With Two Pegs



Pelvic Reconstruction System Phoenix (PRSPHX) PLATES



Intra Medullary Claw (IMC)



Headless Compression Screw (HCS)



Cannulated Screws (CAS)



Elastic Shoulder Immobilizer



Baby monitors and ultrasound machines

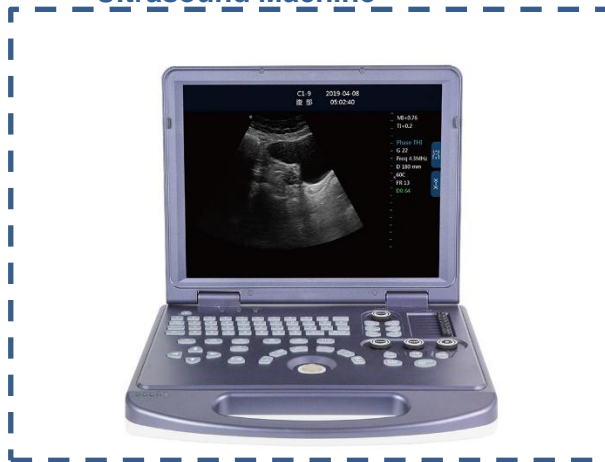
Stable ultrasonic system



DW-T30 Trolley Ultrasonic Diagnostic Apparatus



DW-360 Laptop Black And White Ultrasound Machine



DW-P50(P5PRO) 4d/5d Medical Echo Portable Ultrasound Scan Machine



Wireless Handheld Ultrasound Scanner



Ventilators, test tubes and instruments

Sodium Heparin/Lithium Heparin



Separating gel/coagulant (Gel&Clot Activator)



Dräger Savina® 300 Select



Dräger Babylog® VN800



Dräger Oxylog® 3000 plus



Medical Freezers

Ultra-low temperature medical storage box



Ice-lined vaccine storage box



Ultra-low temperature medical storage box



Ultrasound Devices



Prosthetic Arms



Ventilators



Wheelchairs (Non-Motorised)



Wheelchair Motorised



Assistive Devices





MENTAL LINK
INTERNATIONAL

Download this document
here



Download our product
list here



Mental Link International

PRETORIA OFFICE

Address:

527 Makou Street
Monument Park
Pretoria
0181



012 942 8360

CAPE TOWN OFFICE

Address:

1st Floor, Foyer 3
The Colosseum century way
Century City
Cape Town
7441



087 056 3306



sales@mentallink.co.za
Info@mentallink.co.za



www.mentallink.co.za



@mental.link.inter



@Mentallink_international



@Mental Link International



Mental Link International is an SPI company.

Scan me

